

GSV SSO - Creating and Viewing Custom Maps in Google Earth Pro and Google Maps

1. Download, install and register Google Earth Pro

Navigate to <http://www.google.com/earth/download/gep/agree.html>

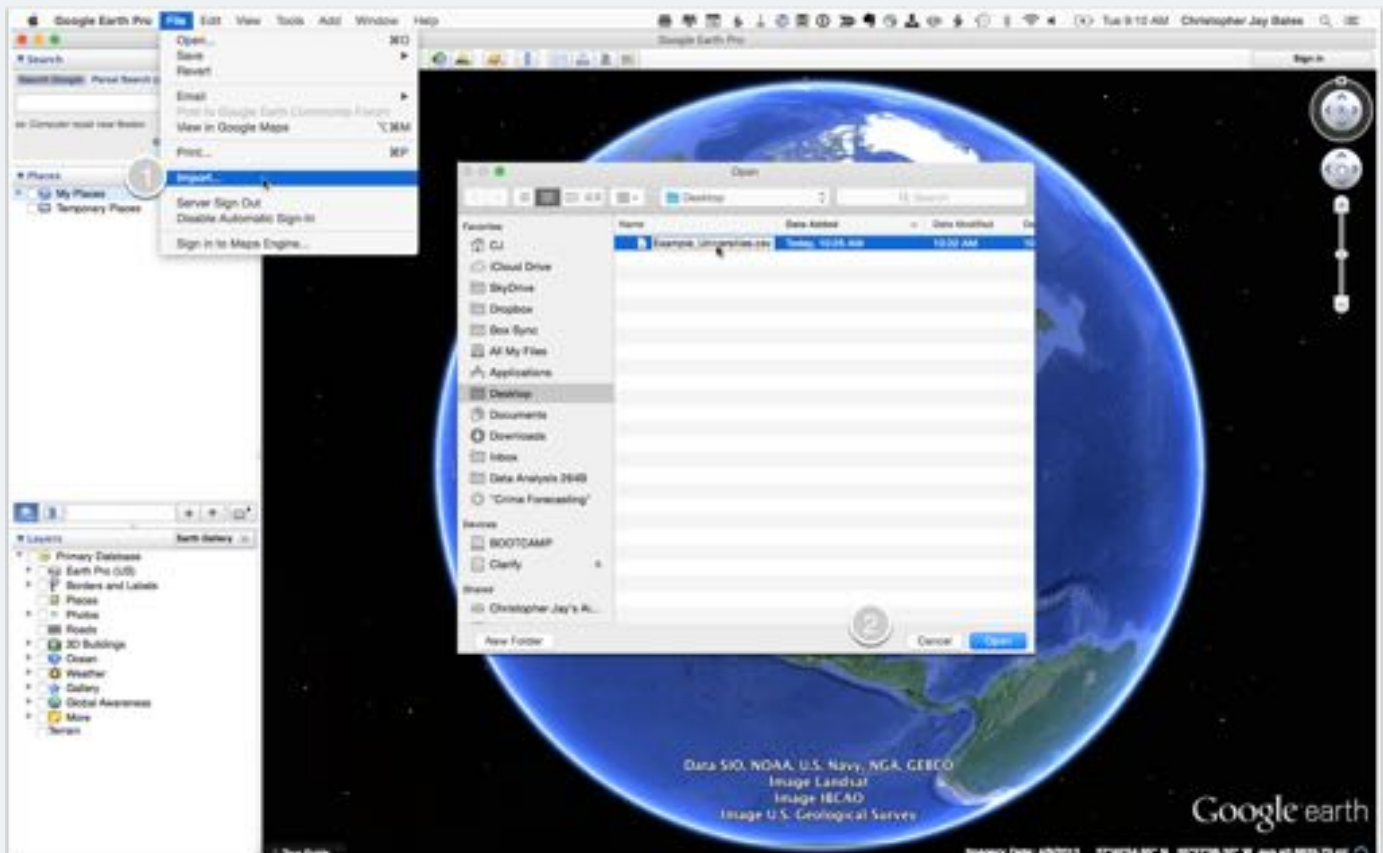
1. Click "Agree and Download" button. Open the installation file and follow instructions.
2. After opening Google Earth Pro, Follow highlighted instructions to sign into Google Earth Pro.

The screenshot shows the Google Earth Pro download page. At the top, there is a navigation bar with 'Home', 'Explore', 'Learn', and 'Connect'. A 'Download Google Earth' button is in the top right. The main heading is 'Download Google Earth Pro for PC or Mac'. Below this, it states 'By installing, you agree to Google Earth's Privacy Policy.' The central content area is titled 'Google Maps/Earth Additional Terms of Service' and includes a 'Last Modified: March 1, 2012' date. It contains a paragraph of legal text. Below the text are three checkboxes: 'Latest version (7.1)' (selected), 'Previous version (7.0)', 'Allow Google Earth to automatically install recommended updates.', and 'Help us improve Google Earth by allowing us to collect anonymous usage statistics.' A blue 'Agree and Download' button is at the bottom left, highlighted with a circled '1'. To the right of the terms of service, there is a green note box with a circled '2' pointing to it, containing a note about license keys. Below the note are sections for 'System requirements' (listing PC and Mac specs) and 'Features of Earth Pro' (listing various capabilities like demographic data, GIS importing, etc.). At the bottom, there are links for 'Google Earth news' and 'Other Google Earth information'.

GSV SSO - Creating and Viewing Custom Maps in Google Earth Pro and Google Maps

2. Geocode data in Google Earth Pro

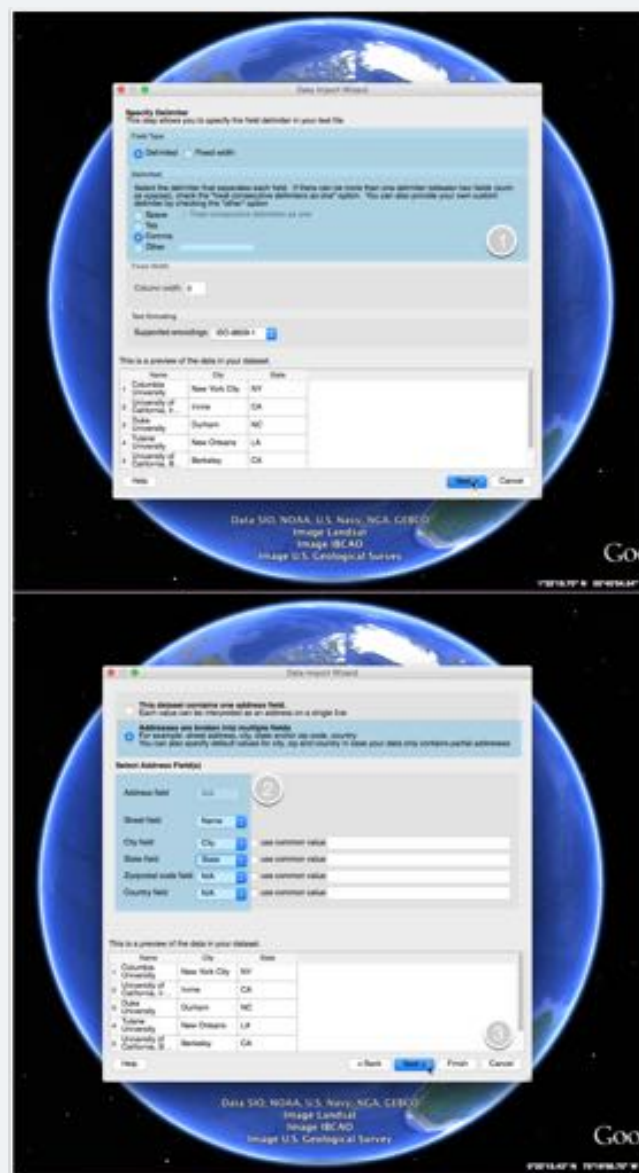
1. From the top menu click "File", and select "Import..." from the drop down menu.
2. In the pop-up window, select file to import and click "Open" button.



GSV SSO - Creating and Viewing Custom Maps in Google Earth Pro and Google Maps

3. Using the Data Import Wizard to geocode data

1. Specify the Delimiter by selecting the correct "Field Type" and how the data is "Delimited". Then click the "Next" button.
2. Select the correct options for how your Address information is parsed in your data. Addresses information can be in one field, or broken down into multiple fields. Click "Next" to further specify characteristics of individual fields. Click "Finish" to begin the geocoding process.



GSV SSO - Creating and Viewing Custom Maps in Google Earth Pro and Google Maps

4. Apply a style template to imported features

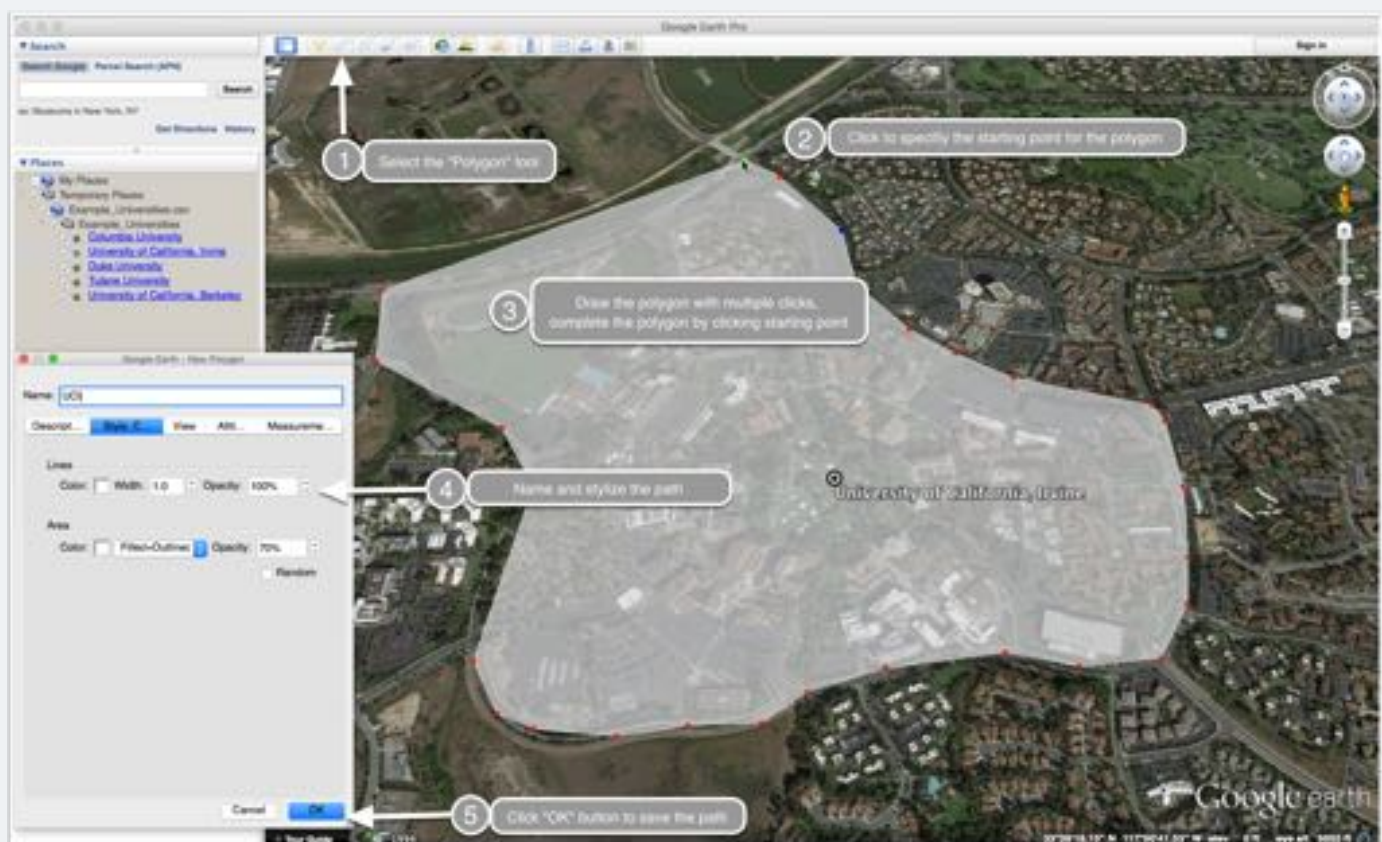
1. Label the imported features by setting the name field.
2. Select an Icon for the imported features.



GSV SSO - Creating and Viewing Custom Maps in Google Earth Pro and Google Maps

5. Draw custom features - Polygons

1. Select the "Polygon" tool
2. Click to specify the starting point for the polygon
3. Draw the polygon with multiple clicks,
4. complete the polygon by clicking starting point
5. Name and stylize the path
6. Click "OK" button to save the path

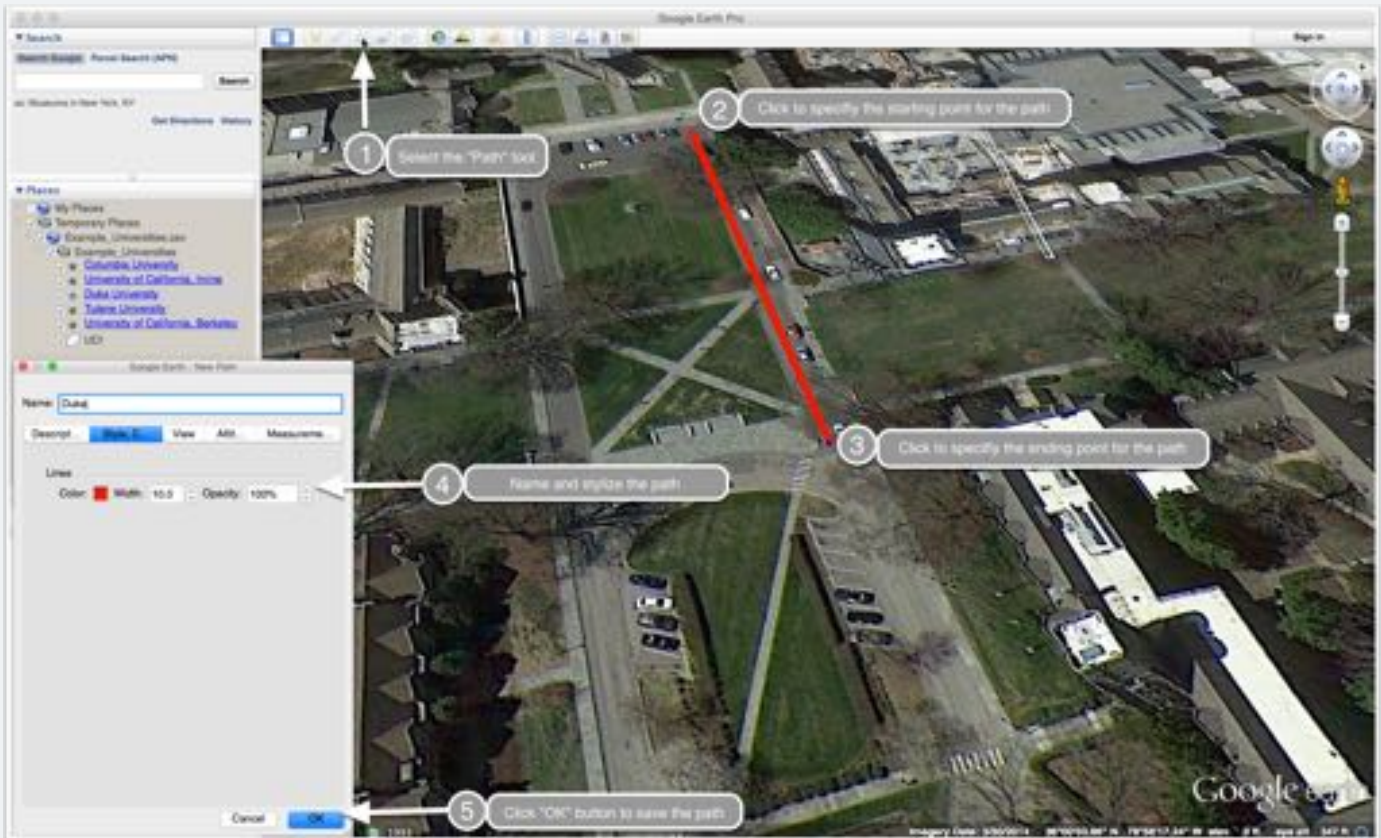


6. Drawing custom features - Paths

1. Select the "Path" tool
2. Click to specify the starting point for the path

GSV SSO - Creating and Viewing Custom Maps in Google Earth Pro and Google Maps

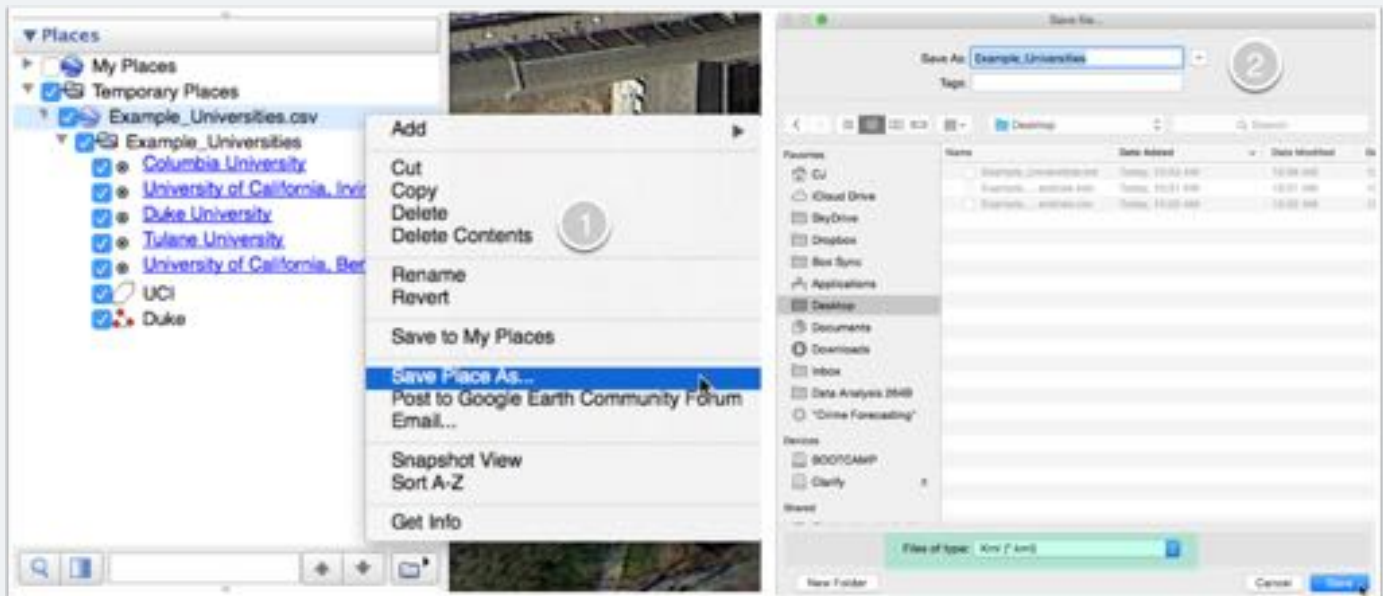
3. Click to specify the ending point for the path
4. Name and stylize the path
5. Click "OK" button to save the path



GSV SSO - Creating and Viewing Custom Maps in Google Earth Pro and Google Maps

7. Export geocoded features and drawn features

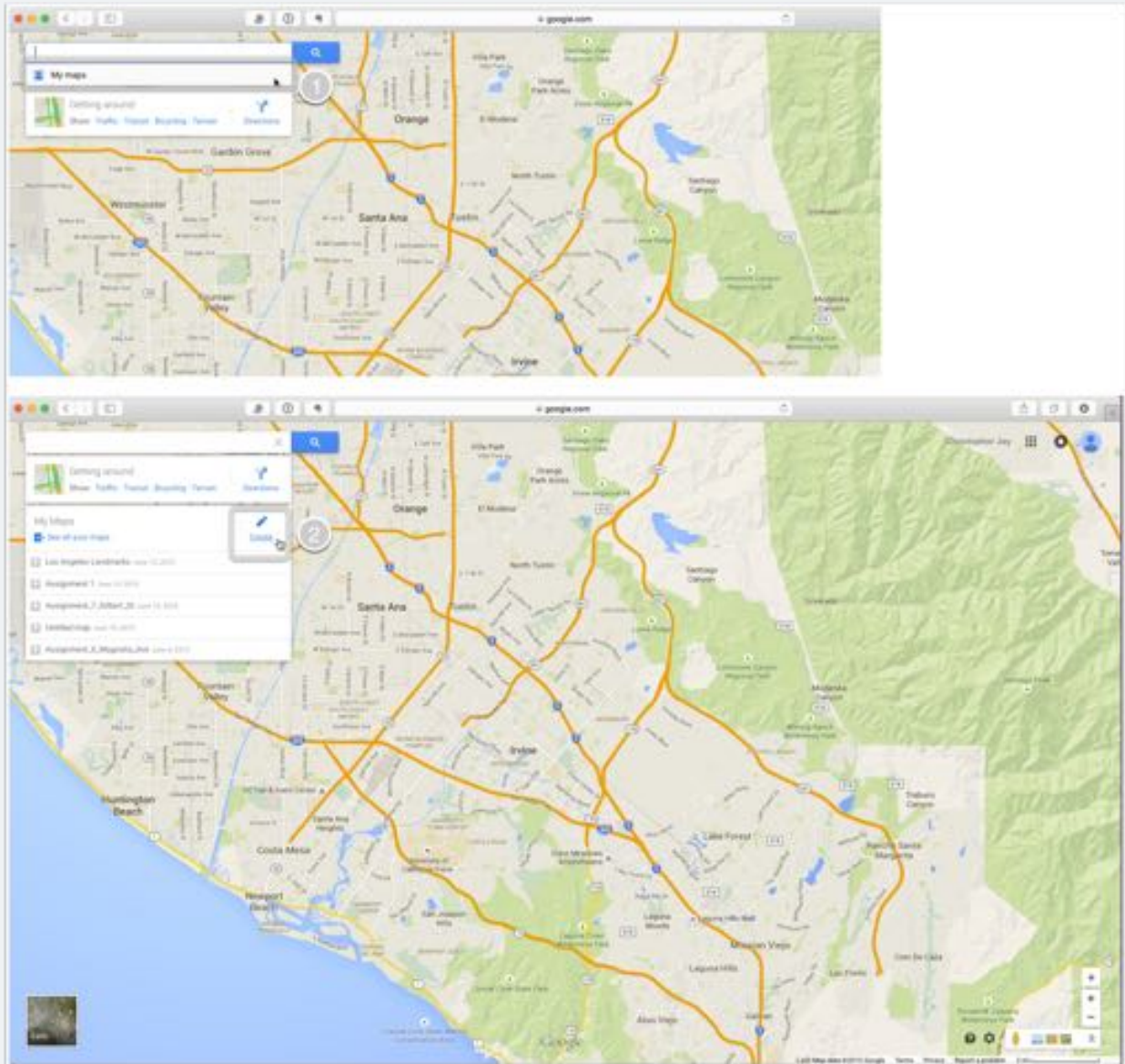
1. Right click on the folder in "Places" tab on left navigation panel. Then select "Save Place As..."
2. Type a name of the file to "Save As:". Select "KML" from the drop menu of "Files of Type". Click "Save" button.



GSV SSO - Creating and Viewing Custom Maps in Google Earth Pro and Google Maps

8. Import a custom map into Google Maps

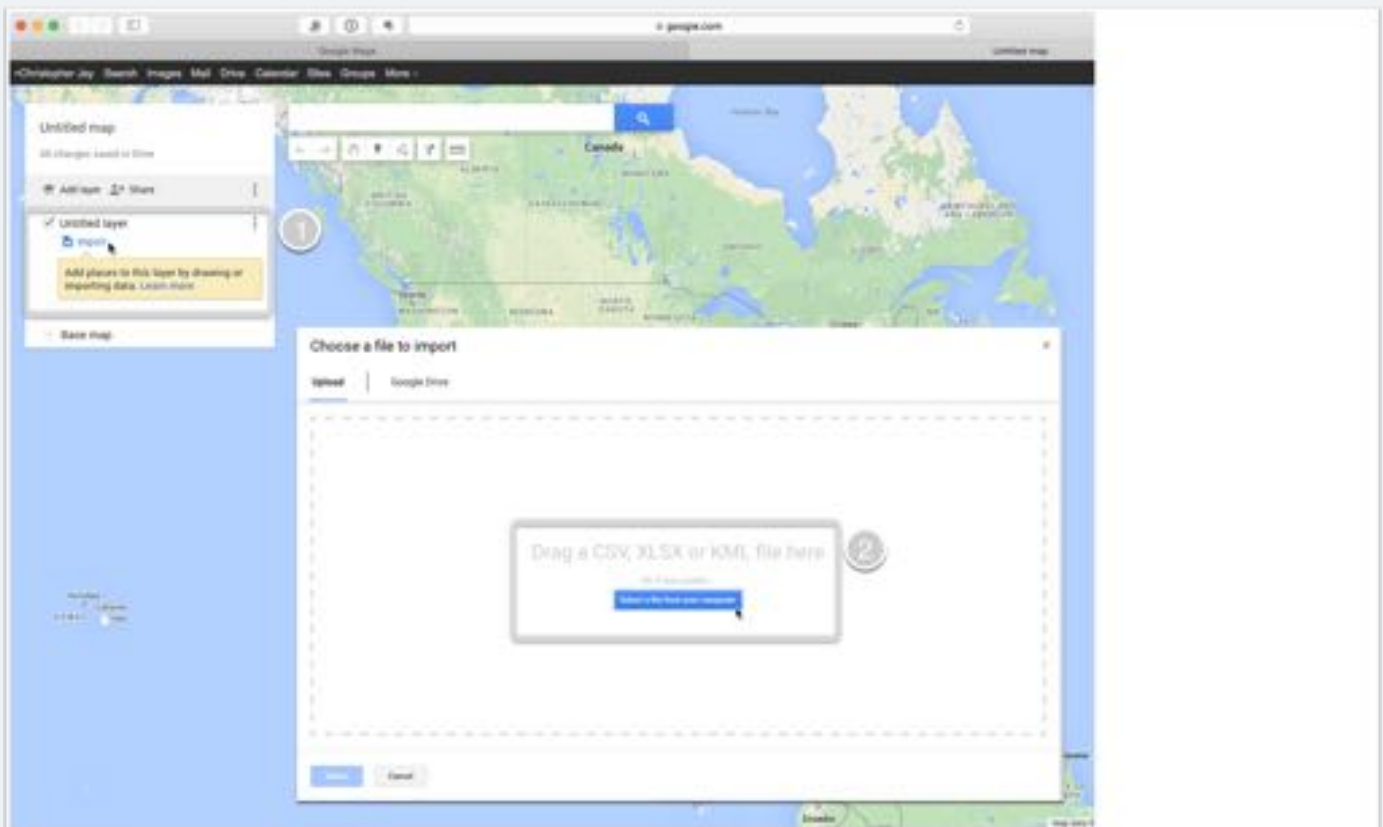
1. Navigate to www.google.com/maps in your internet browser. Click on the Maps search bar, and click My maps from the drop down list.
2. Click on "Create" link from the "My Maps" card.



GSV SSO - Creating and Viewing Custom Maps in Google Earth Pro and Google Maps

9. Use the Google Maps Engine to import a custom map

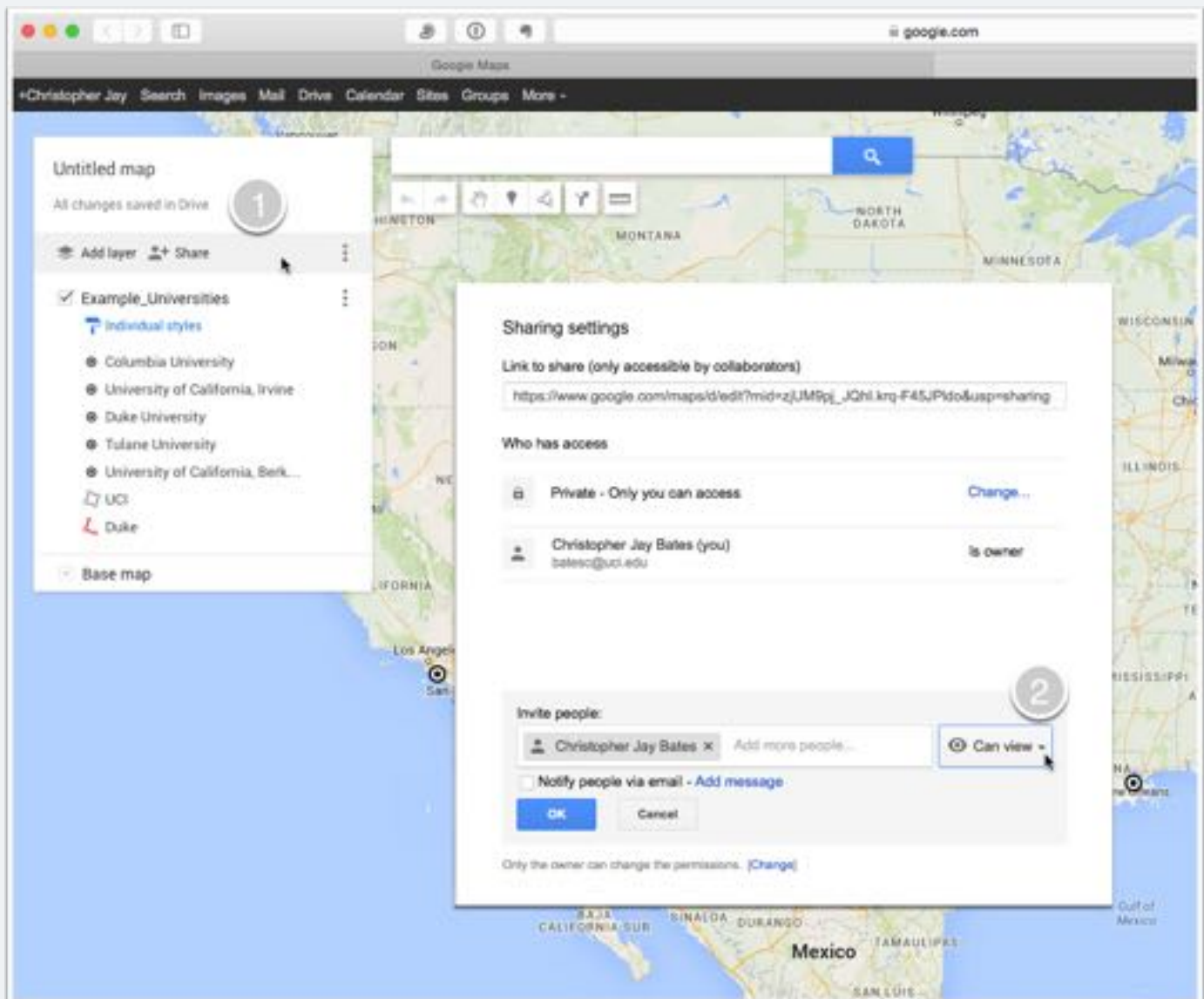
1. Click "Import" under "Untitled layer"
2. Drop (or select) the saved KML file from Google Earth Pro into the popup window. Click "Select" button.



GSV SSO - Creating and Viewing Custom Maps in Google Earth Pro and Google Maps

10. Share a custom map in Google Maps

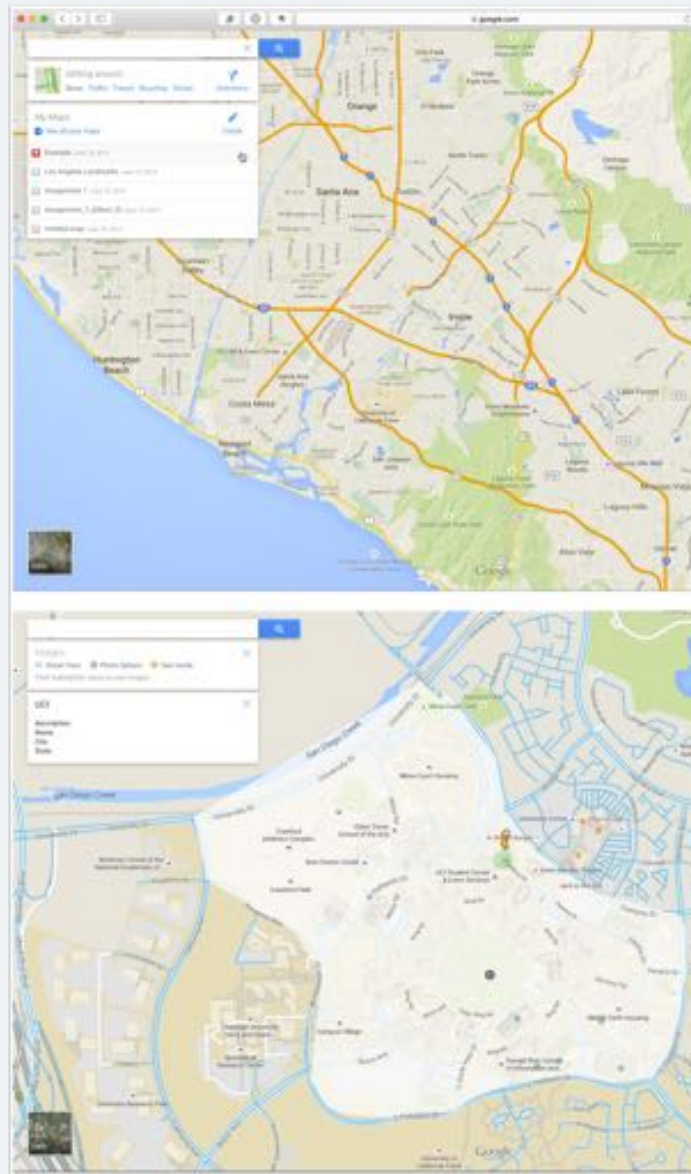
1. After import, the geocoded and drawn features created in Google Earth Pro will display in the Google Maps Engine. Click the "Share" button.
2. Add email addresses in "Invite people:" field. Select "Can view" or "Can edit" from the drop down menu. Click the "OK" button.



GSV SSO - Creating and Viewing Custom Maps in Google Earth Pro and Google Maps

11. Open custom map in Google Maps

1. Navigate to www.google.com/maps in your internet browser. Click on the Maps search bar, and click My Maps from the drop down list.
2. Click on the newly created Map from the My Maps card.
3. The geocoded and drawn features of the map are displayed in Google Maps.



GSV SSO - Creating and Viewing Custom Maps in Google Earth Pro and Google Maps

12. Use Google Maps with your custom map

1. In addition, to displaying custom geocoded and drawn features, the functions of Google Maps are still usable.
2. Enter Google Street View by dragging and dropping the Pegman icon (located in the lower right corner) on to a street.

